

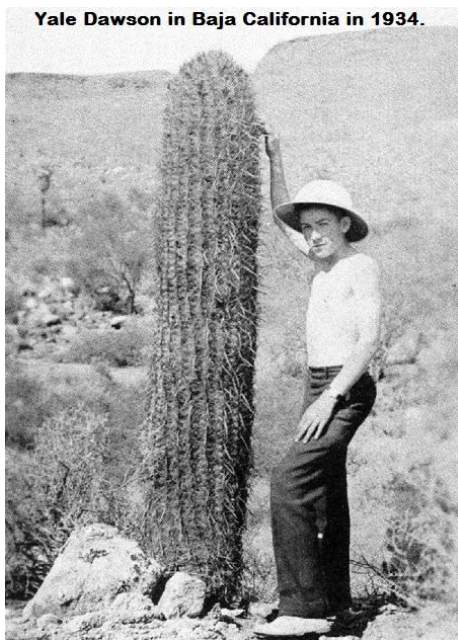
YALE DAWSON IMAGES



Yale Dawson in his back yard in Long Beach, California before 1933 earthquake.



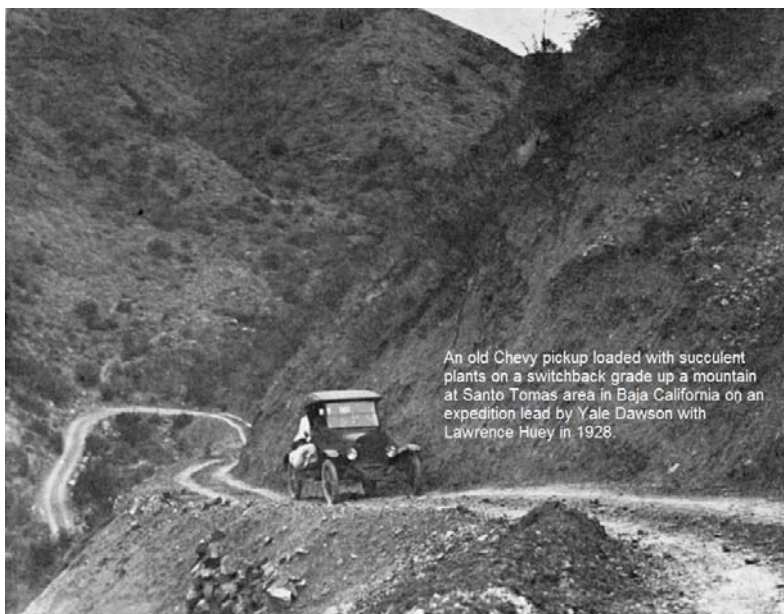
Yale Dawson with his cactus collection in 1933.



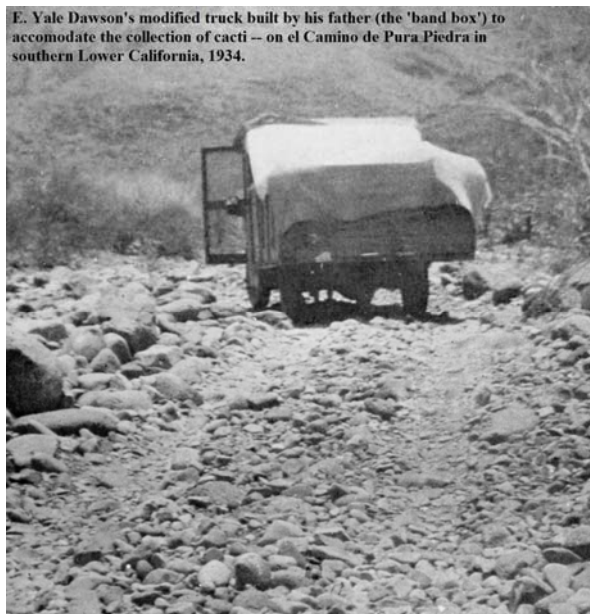
Yale Dawson in Baja California in 1934.



Yale Dawson at age 30 under *Lemaireocereus guereteroensis* draped with *Hylaeocereus tricostatus* near Union de Tula, Jalisco, Mexico.



An old Chevy pickup loaded with succulent plants on a switchback grade up a mountain at Santo Tomas area in Baja California on an expedition led by Yale Dawson with Lawrence Huey in 1928.

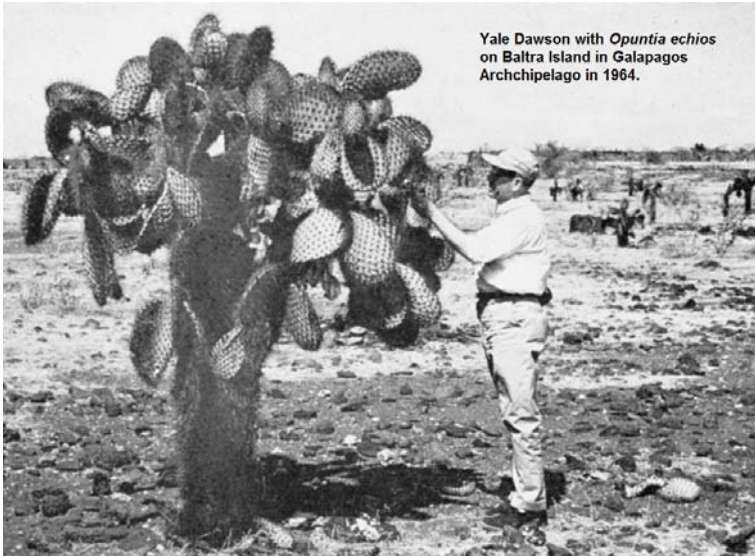


E. Yale Dawson's modified truck built by his father (the 'band box') to accommodate the collection of cacti -- on el Camino de Pura Piedra in southern Lower California, 1934.

Elmer Yale Dawson (1918-1966) from his 1963
How to Know The Cacti book.



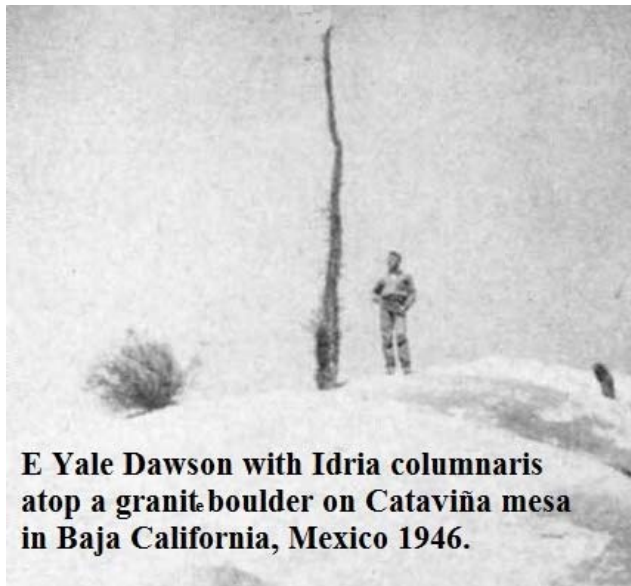
Yale Dawson with *Nopalea cochenillifera* at Small Hope Bay
at Adros Island, Bahamas February 1966.



Yale Dawson with *Opuntia echios*
on Baltra Island in Galapagos
Archipelago in 1964.



Yale Dawson with *Opuntia galapageia* var. *macrocarpa*
on Duncan Island in Galapagos Archipelago in 1964.



**E Yale Dawson with *Idria columnaris*
atop a granit boulder on Cataviña mesa
in Baja California, Mexico 1946.**



"Copyrighted material on this site is used in accordance with 'Fair Use', for the purpose of providing dedicated cactus and other succulent plant personalities, and will be removed at the request of copyright owner(s). As a non-profit, non-revenue producing site, the CSSA Archives provides its content as a free, educational and informative service for its readers. Copyrighted content on this site may not be further used for profitable purposes without the expressed written permission and consent of the copyright owner(s)."